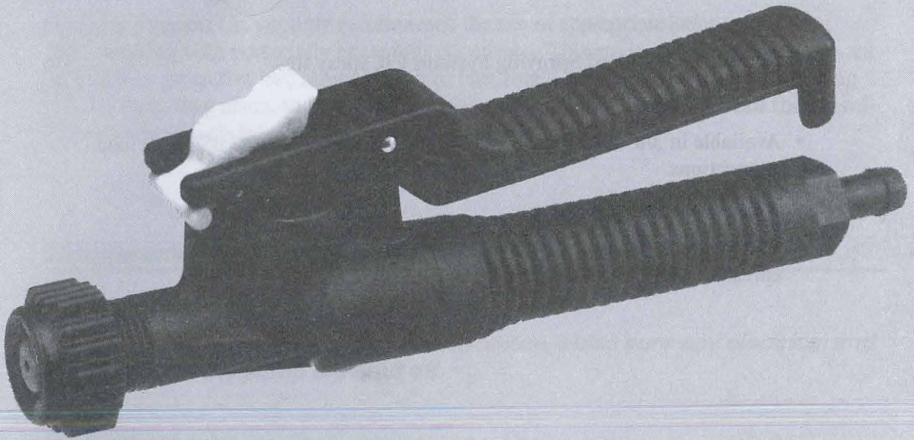


TriggerJet[®]

SPRAY GUN



**OWNER'S
MANUAL**

MI 22650



Spraying Systems Co.[®]

Introduction

The TriggerJet is a lightweight hand spray gun designed for use with backpack, canister, or other low pressure spray systems. The TriggerJet is made of molded polypropylene for excellent chemical resistance and durability.

Features of the TriggerJet Spray Gun

- Replaceable diaphragm made of Viton.
- Trigger lock permits locking valve in open position for continuous flow.
- Maximum operating pressure of 150 psi (10 bar).
- Accepts all standard Spraying Systems Co. spray tips.
- Available in 3/8" & 1/4" hose shank, 1/4" NPT(F), and 1/4" BSPT(F) inlet connections.
- The 22670-PP TriggerJet kit includes a 15" or 24" extension, and spray tip (refer to attached parts list PL22670-PP).

Installation

Before connecting the TriggerJet to supply hose install the appropriate spray tip and extension, if desired. Position spray tip for your particular need and tighten the cap.

Attach the TriggerJet to the supply hose. Examine all connections and make sure there are no leaks. Please note, the maximum operating pressure for the TriggerJet Spray Gun is 150 psi (10 bar).

Safety

It is important to recognize the proper safety precautions when using a spray gun. Do not aim the TriggerJet Spray Gun at any person or part of the body. Fluids under pressure can penetrate human skin and cause severe injury. Chemicals also cause severe burns and injury. Thoroughly clean the TriggerJet after each use.

Spraying Systems Co. strongly recommends the use of appropriate safety equipment when working with potentially hazardous chemicals. This equipment includes, but is not limited to, a protective hat, safety glasses or face shield, chemical resistant gloves, long sleeved shirt, long pants, and a chemical resistant apron. **Remember to read the chemical manufacturer's label and follow all directions.**

Maintenance Instructions

Caution: Before performing any maintenance, make sure any electrical and liquid lines to the pump are shut off.

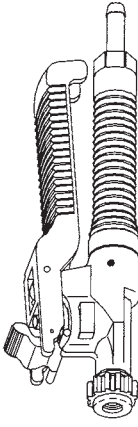
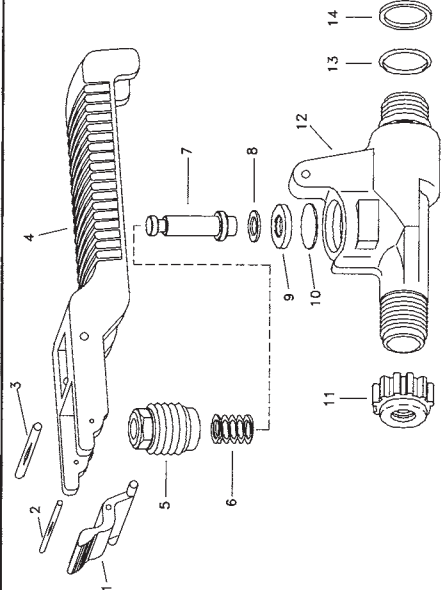
Disassembly (refer to parts list PL22650-PP)

1. Punch out groove pin (3) from trigger (4) and body (12). Push trigger forward to disengage from stem (7).
2. Remove trigger (4) from body (12).

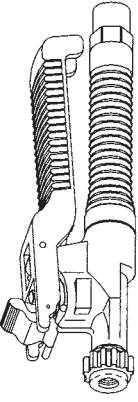
3. Use a wrench on hex end of spring retainer (5) to carefully remove the spring retainer from body (12). Please note that the spring (6) is compressed under this retainer.
4. The spring (6), stem (7), washers (8 and 9), and diaphragm (10) can now all be easily removed.
5. Remove cap (11) from body (12).
6. If necessary, use a wrench on hex end handle (14) to loosen and remove handle from body (12).
7. Remove O-ring (13) from body (12).

Assembly (refer to parts list PL22650)

1. Install O-ring (13) into body (12).
2. Thread handle (14) onto body (12) and tighten.
3. First install diaphragms (10) and then the washers (8 and 9) into body (12). Please note that the washer (8) is properly installed when the recessed side faces the washer (9).
4. Place spring (6) on stem (7) and insert both items into spring retainer (5).
5. Install the spring (6), stem (7), and retainer (5) assembly into body (12).
6. Attach trigger (4) to body (12) and install groove pin (3).
7. Thread cap (11) onto outlet of body (12).



MODEL No. 22650-PP-406
MODEL No. 22650-PP-300



MODEL No. 22650-PP-1/4
MODEL No. B22650-PP-1/4

ITEM	PART NO.	DESCRIPTION
1	CP22656-NY	Trigger Lock, Nylon
2	CP22671-IZP	Groove Pin, Steel, Zinc Plated
3	CP22672-IZP	Groove Pin, Steel, Zinc Plated
4	CP22655-PP	Trigger, Polypropylene (Black)
5	CP22658-PP	Spring Retainer, Polypropylene (Black)
6	CP22680-FHSS	Spring, Type 17-7PH Stainless Steel
7	CP22657-NY	Stern, Nylon (Gray)
8	CP22676-NEO	Gasket, Neoprene
9	CP22659-PP	Washer, Polypropylene (Black)
10	CP22661-VI	Diaphragm, Viton
11	CP22668-PP	Cap, Polypropylene (Black)
12	CP22651-PP	Body, Polypropylene (Black)
13	CP7717-2-016-VI	O Ring, Viton
14	CP39334-VI	Gasket, Viton
15	CP22652-3/8-PP	Handle (With 3/8" Hose Shank Conn.), Polypropylene (Black) For #22650-PP-406
15A	CP22653-1/4-PP	Handle (With 1/4" Hose Shank Conn.), Polypropylene (Black) For #22650-PP-300
15B	CP22654-PP	Handle (With 1/4" NPT (F) Conn.), Polypropylene (Black) For #22650-PP-1/4
15C	CPB22654-PP	Handle (With 1/4" BSP (F) Conn.), Polypropylene (Black) For #22650-PP-1/4
	No. 22650-PP-406	TriggerJet® Spray Gun, Polypropylene
	No. 22650-PP-300	TriggerJet® Spray Gun, Polypropylene
	No. 22650-PP-1/4	TriggerJet® Spray Gun, Polypropylene
	No. B22650-PP-1/4	TriggerJet® Spray Gun, Polypropylene

PK-AB22650-PP-KIT Spare Parts Kit (Includes all items marked with *)

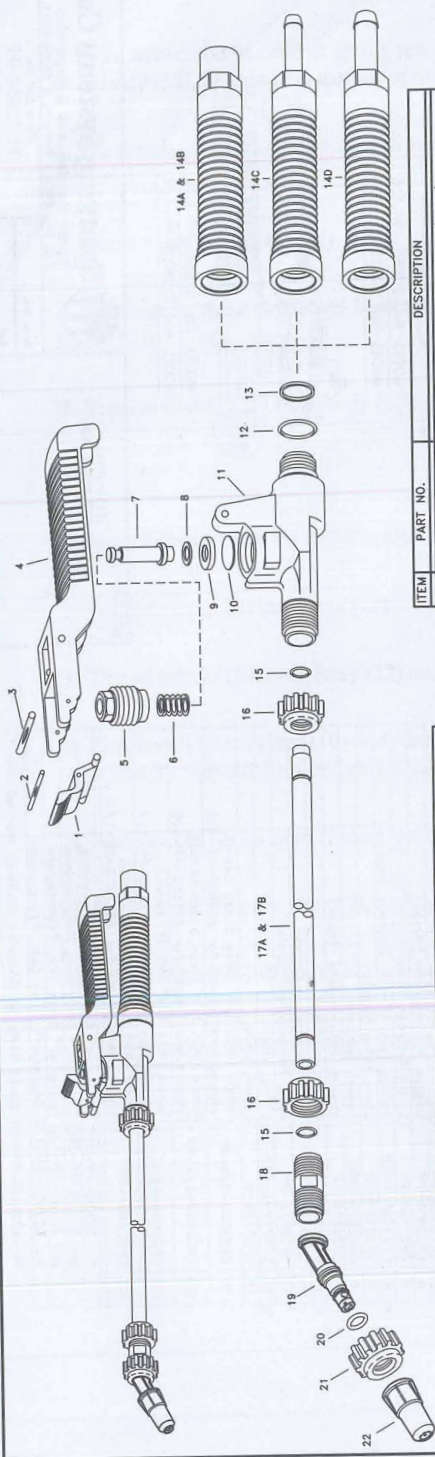
DESCRIPTION:
No. 22650-PP--
TRIGGERJET® SPRAY GUN



Spraying Systems Co.
Spray Nozzles and Accessories
P.O. Box 7800 • Wheaton, IL 60189-7800

Rev. No. _____
Part. List No. _____
Ref. _____

PL 22650-PP
SHEET OF



ITEM	PART NO.	DESCRIPTION
18	CP22654-PP	Straight Adapter, Polypropylene (Black)
19	CF38722-1-PP	Core, Polypropylene (Black)
20	CF7717-5-EPR	O-Ring, EPDM
21	CP22668-PP	Cap, Polypropylene (Black)
22	CF38721-PP-**	Tip Body, Polypropylene
	38720-PPB-**	Adjustable ConeJet Sub-Asb. (Items 19 thru 22)
	22665-15-PP	Extension Tube Sub-Asb. For 22670-PP-15-- (Includes Items 15, 16 & 17)
	22685-2-4-PP	Extension Tube Sub-Asb. For 22670-PP-24-- (Includes Items 15, 16 & 17A)
	No. 22670-PP-15-1/4	TriggerJet® Spray Gun with 15" Extension
	No. B22670-PP-15-1/4	TriggerJet® Spray Gun with 15" Extension
	No. 22670-PP-15-300	TriggerJet® Spray Gun with 15" Extension
	No. 22670-PP-15-408	TriggerJet® Spray Gun with 15" Extension
	No. B22670-PP-24-1/4	TriggerJet® Spray Gun with 24" Extension
	No. 22670-PP-24-1/4	TriggerJet® Spray Gun with 24" Extension
	No. 22670-PP-24-300	TriggerJet® Spray Gun with 24" Extension
	No. 22670-PP-24-408	TriggerJet® Spray Gun with 24" Extension
	PK-AB22670-PP	Kit Spare Parts Kit (Includes all items marked with *)

ITEM	PART NO.	DESCRIPTION
1	CP22656-NY	Trigger Lock, Nylon (Gray)
2	CP22671-IZP	Groove Pin, Steel, Zinc Plated
3	CP22672-IZP	Groove Pin, Steel, Zinc Plated
4	CP22655-PP	Trigger, Polypropylene (Black)
5	CP22658-PP	Spring Retainer, Polypropylene (Black)
6	CP22660-PHSS	Spring, Type 17-7PH Stainless Steel
7	CP22657-NY	Stem, Nylon (Gray)
8	CP22676-NEO	Cosket, Neoprene
9	CP22659-PP	Washer, Polypropylene (Black)
10	CP22661-VI	Diaphragm, Viton
11	CP22651-PP	Body, Polypropylene (Black)
12	CF7717-2-016-VI	O-Ring, Viton
13	CF59334-VI	Gasket, Viton
14A	CP22654-PP	Handle (1/4" NPT (F) Conn.), Polypropylene (Black), For 22670-PP-1/4
14B	CF922654-PP	Handle (1/4" BSPT (F) Conn.), Polypropylene (Black), For B22670-PP-1/4
14C	CF22653-1/4-PP	Handle (1/4" Hose Shank Conn.), Polypropylene (Black), For 22670-PP-300
14D	CP22652-3/8-PP	Handle (3/8" Hose Shank Conn.), Polypropylene (Black), For 22670-PP-408
15	GF7717-2/110-VI	O-Ring, Viton (2 Req'd)
16	CP22668-PP	Cap, Polypropylene (Black), 2 Req'd
17	CP22663-15-FRP	Extension Tube 15" Length, Polyester (Black), For 22670-PP-15--
17A	CP22663-24-FRP	Extension Tube 24" Length, Polyester (Black), For 22670-PP-24--

Spraying Systems Co.
 Spray Nozzles and Accessories
 P.O. Box 7300 - Waterloo, IL 60187-7301

Parts List No.
PL 22670-PP

Rev. No. 1
 Ref.

DESCRIPTION:
 No. 22670-PP TRIGGER SPRAY GUN WITH EXTENSION AND SPRAY TIP

SHEET OF



Spraying Systems Co.[®]

P.O. Box 7900 • Wheaton, Illinois 60189-7900 USA
Telephone (630) 665-5000 • FAX (630) 260-0842



Printed in USA
on Recycled Paper

© Spraying Systems Co. 2015